

Frontline® BPA® 600

Dual Mode Bluetooth® Protocol Analyzer



Key Features and Benefits

- Ultra-Portable**
 USB-powered and tiny footprint means you decide where and how to work
- Faster Debugging**
 Bluetooth low energy and Classic Bluetooth data is displayed in a single graphical user interface
- See events as they occur through live decoding and decryption of encrypted data
- Bluetooth Audio Expert System, included as standard, for root cause analysis of Bluetooth-related audio issues
- Maximum Flexibility**
 DecoderScript lets you specify decodes for custom protocols
- Supports low energy features through Bluetooth 4.2 except optional extended packet length
- Roleless Single/Multi Connections**
 No longer need to specify which device is master and slave
- Follow pairing and decrypt encrypted traffic including Secure Simple Pairing
- Pre-Connection Traffic**
 See pre-connection paging, response, polling, FHS and acknowledgement packets, and visibility into all three advertising channels concurrently

The Frontline® BPA® 600 Dual Mode Bluetooth Protocol Analyzer combines low energy and BR/EDR data in the same intuitive displays, simplifying and accelerating the debugging process.

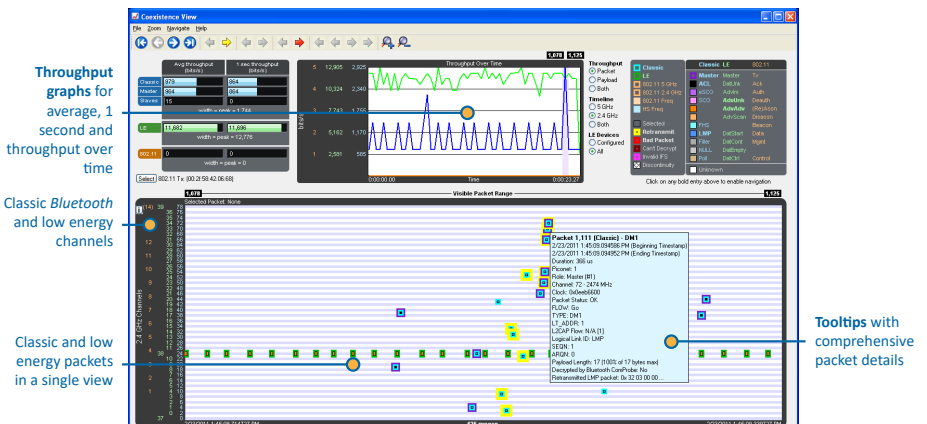
USB Powered

The Frontline BPA 600 Dual Mode Bluetooth Protocol Analyzer is a chipset-based analyzer that is entirely USB-powered. Simply connect the analyzer to your laptop with a standard USB cable and take it wherever you need to go.

Flexible and Easy to Use

The BPA 600 analyzer is easy to use and gives you flexibility to capture either "Classic" Bluetooth, low energy or both. With the BPA 600 hardware you can dedicate the entire analyzer to either of these technologies.

The Frontline BPA 600 Bluetooth Protocol Analyzer lets you to see and analyze "Classic" and low energy in a single coexistence view. You can see Classic and low energy connections simultaneously. This includes "Pre-Connection" traffic and frequency hopping sequence (FHS) packet information.



Link Key Handling

The Frontline BPA 600 analyzer makes link key management easy - forwards or backwards, don't worry about the order of the link key. You don't have to re-enter even if you put it in the wrong order. The Frontline BPA 600 datasource automatically changes the link key order entered by the user to the correct one. You don't have to re-enter even if you put it in the wrong order.

Specifications

Supported Systems

- OS Supported: Windows 7, 8 and 10
- USB Port: USB 2.0 or USB 3.0 High-Speed

Minimum System Requirements

- Processor: Core i5 processor at 2.7 GHz
- RAM: 4 GB
- Free Hard Disk Space: 20 GB

Bus Type

- USB 2.0 Mini B, compatible with USB1.1

Operating Frequencies

- 2402 MHz – 2480 MHz

Effective Receiver Sensitivity (conducted, not radiated)

- -90.0 dBm for GFSK

Power

- USB

Dimensions

- 5" X 2.75" X 1.0625" (127mm X 70mm X 27mm)

Weight

- 0.44lb / 200g

Temperature

- Storage Temperature: 0° to 65° Celsius (32° to 149° Fahrenheit)
- Operating Temperature: 5° to 55° Celsius (41° to 131° Fahrenheit)

Humidity

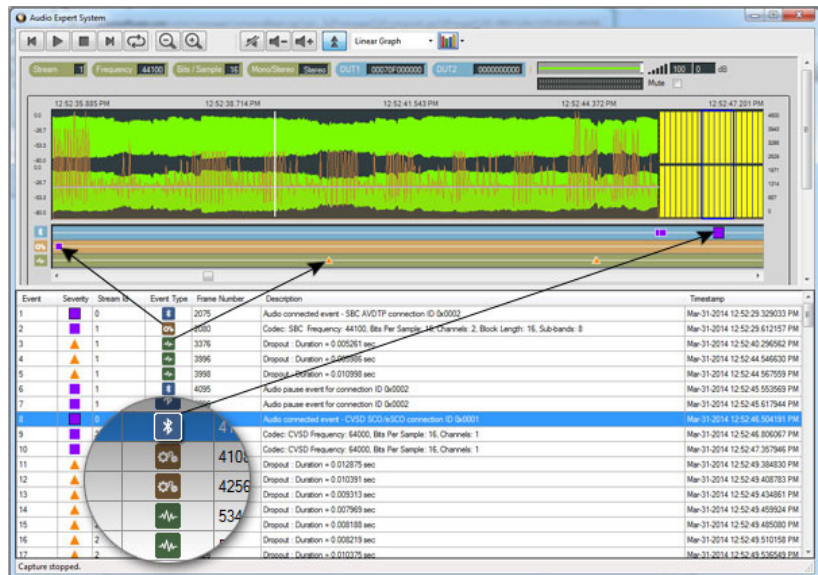
- Operating: 10% to 90% RH (noncondensing)

Portability... and more!

Portability is key to today's developer and troubleshooter. With the BPA 600, developers can unplug from the AC outlet and take their testing and development operations where these technologies actually live - the real world. Running on USB power and smaller than a paperback book, the Frontline BPA 600 lets you decide how and where to work.

But portability is only the beginning - the powerful BPA 600 features:

- Role-less single and multi connections, which no longer require the user to specify which device is the master and which is the slave
- Decryption of multiple connections
- Automatic programmable link key insertion to BPA 600 from 3rd party software tools or debug applications, and link key now reverses automatically when necessary
- Supports low energy features through Bluetooth 4.2 except optional extended packet length
- Bluetooth Audio Expert System for pinpointing Bluetooth-related audio issues



Ordering Information

Product Description

BPA 600 Dual Mode Bluetooth Protocol Analyzer

Product Code

2014-11000-002



绿测科技有限公司

广州总部: 广州市番禺区陈边村金欧大道83号江潮创意园A栋208室
深圳分公司: 深圳市龙华区龙华街道 油松社区东环一路1号耀丰通工业园1-2栋2栋607
南宁分公司: 广西自由贸易试验区南宁片区五象大道401号五象航洋城1号楼3519号
广州分公司: 广州市南沙区凤凰大道89号中国铁建·凤凰广场B栋1201房
电话: 020-2204 2442
传真: 020-8067 2851
邮箱: Sales@greentest.com.cn
官网: www.greentest.com.cn



微信视频号



绿测科技订阅号



绿测工场服务号