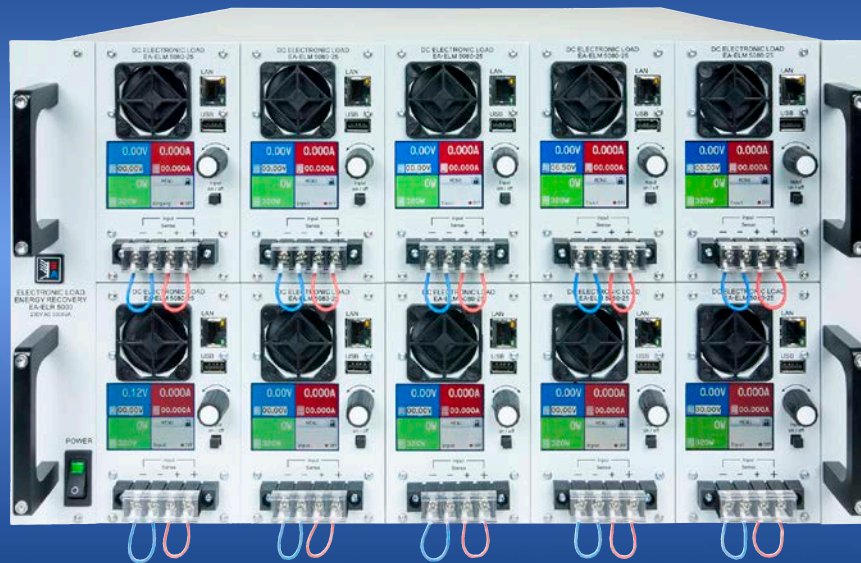


EA-ELR 5000 320 W - 3200 W



Programmable electronic DC loads with energy recovery



EA-ELR 5000 Rack

U I P OVP OCP OPP OTP 19" LAN

- Multi-channel DC load
- Energy recovery of the supplied DC energy into the local grid
- 19" 6U rack for up to 10 separate load modules
- Input power rating: 320 W per module
- Input voltages: 80 V or 200 V
- Input currents: 12 A or 25 A per module
- Remote sensing
- μ Controller based digital control
- Bilingual TFT touch panel (German/English)
- Sequence generator
- Battery test function
- MPP tracking function
- Ethernet/LAN interface built-in
- SCPI and ModBus RTU/TCP* command set

General

This series EA-ELR 5000 was designed to configure a multi-channel electronic DC load. In a rack for 19" systems, up to ten DC load units with 320 W nominal power each can be installed. The modular units operate separately from each other, but require the rack as it contains the energy recovering DC-AC inverter. The modules are also extendable. Parallel connection on the DC inputs of the module is possible. The load modules come in two voltage variants, 80 V and 200 V, and incorporate the common regulation modes constant voltage (CV), constant current (CC) and constant power (CP).

The energy recovery function inverts the supplied DC energy into a synchronous sine current and feeds it back into the local grid. This reduces the usual heat dissipation to a minimum and saves energy costs at the same time. The color TFT touch panel offers an intuitive kind of manual operation.

Equipped with an Ethernet port by default, the load units can be easily integrated into a network of LAN devices with a standard LAN switch, which is also available as accessory (Netgear, 1U, 19"). External control is possible via an included Windows software or via custom applications created in LabView or other IDEs. The commonly known communication protocols SCPI and ModBus RTU are supported.

* Modbus TCP only from firmware 2.05

EA-ELR 5000 320 W - 3200 W

Power ratings, voltages, currents

There are two load models available. One for max. 80 V DC input voltage and one for max. 200 V. Both models have a max. power of 320 W, while the 80 V model can take up to 25 A and the 200 V can take up to 12 A or current. By installing up to 10 units of these load modules into a single rack it's possible to extend the power to a total of 3200 W.

Construction

The rack, which is used to hold the load modules is designed in 19" width and 6U of height, while having an installation depth of 480 mm (18.9"). This makes it ideal for use in 19" cabinets of various sizes.

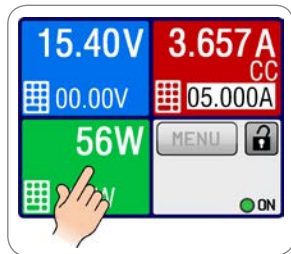
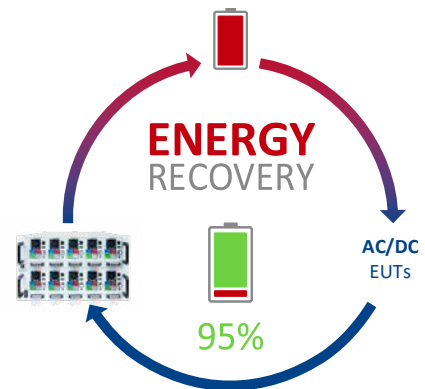
Supply

The rack requires to be wired to a main connection with 208 V AC (±10%) and minimum 16 A fusing. The recovery feature requires to always have sufficient devices on the local power grid to consume the recuperated energy.

Energy recovery

The most important feature of these electronic loads is that the AC input, i.e. grid connection, is also used as output for the recovery of the supplied DC energy, which will be converted with an efficiency of up to 95%. This way of energy recovery helps to lower energy costs and avoids expensive cooling systems, such as required for conventional electronic loads which convert the DC input energy into heat.

Operation of these recovering loads in terms of electricity generation is not intended. Grid protection devices which can supervise the feedback of energy into the public grid are available on the market for optional installation and are installed to achieve additional safety of persons and equipment, especially when running the so-called isolated operation.



Operation (HMI)

Manual operation is done with a resistive touch panel, two rotary knobs and a pushbutton. The color display shows all relevant set values and actual values at a glance. The whole setup is also done with the human-machine interface, as well the configuration of the sequence generator.

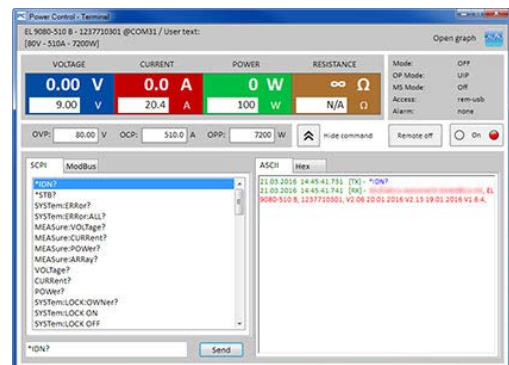
Remote control & connectivity

For remote control, there is by default an Ethernet/LAN port available on the front of the modules. Via this configurable connection users can completely control all functions of the modules either via SCPI language, ModBus RTU or ModBus TCP protocol.

An USB port, also located on the front side, is intended for USB sticks in order to load and save sequences for the sequence generator or load/save curve for MPP tracking.

For the implementation into the LabView IDE we offer ready-to-use components (VIs) to be used with the Ethernet interface. Other IDEs and interfaces are supported by documentation about the communication protocol.

Windows users can profit from the free software "EA Power Control". It offers a feature called "Sequencing", where the device is controlled through a table in CSV format to achieve automatic test runs. This table represents simple to complex test procedure and can be created and edited in MS Excel or other CSV editors and then imported into the software tool. This software also allows for the control of up to 20 units at once with an optional feature called "Multi Control" (licensed, not free of charge).

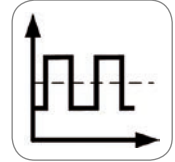


EA-ELR 5000 320 W - 3200 W



Sequence generator

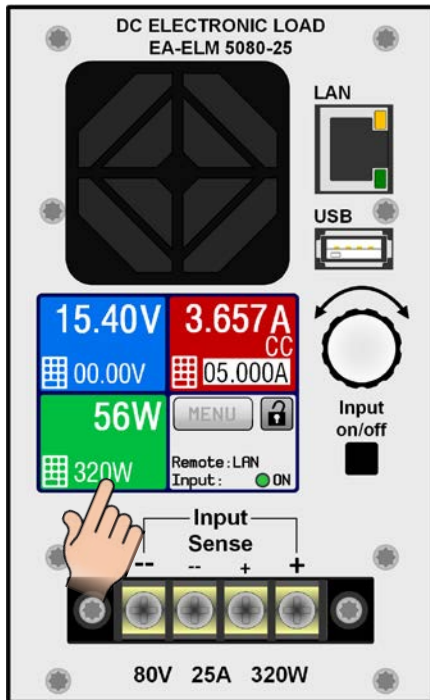
A special feature is the digital sequence generator. It enables to control the load unit by semi-automatic sequence blocks (max. 100). Those blocks consist of programmable set values for voltage, current and power, plus a time value. The generator can apply a rectangular wave signal to any or all set values at once.



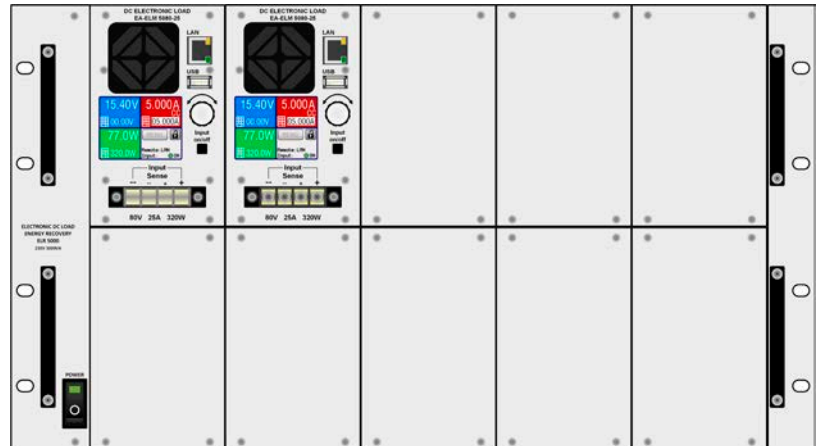
Options

- Ethernet switch (in 1U of height), 16 ports, for 19" rack mount
- Grid protection & supervision module EA-ENS2

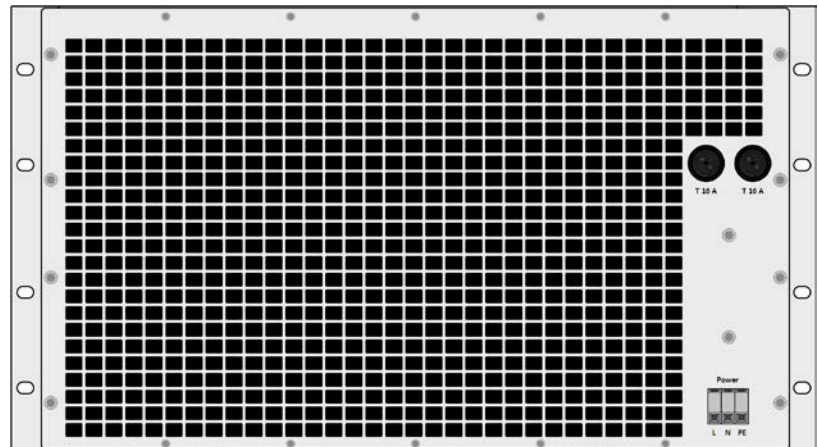
Product views



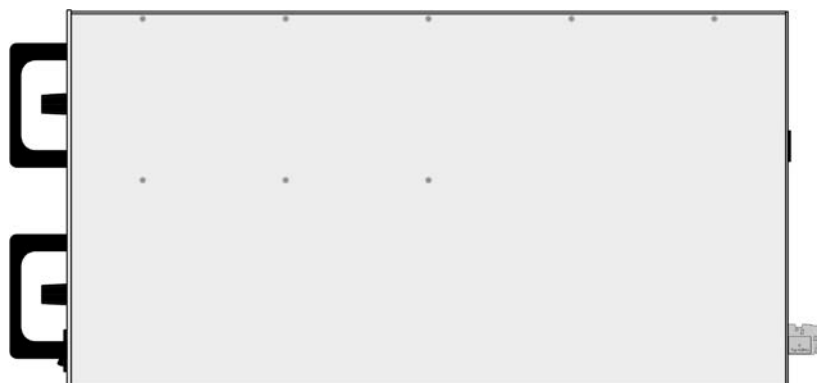
Front view of a single load module with control panel



Front view of a partly equipped rack



Rear view



Side view

EA-ELR 5000 320 W - 3200 W



Technical Data	EA-ELR 5000 Rack
AC: Supply	
- Voltage	189...229 V AC (L-L)
- Frequency	45...65 Hz
- Efficiency	≥92%
Cooling	
- Kind	Temperature-controlled fans
- Operation temperature	0...50 °C
- Storage temperature	-20...70 °C
Protection class	1
Degree of pollution	2
Terminals	
- AC connection	Screw terminal, 3 pole, 16 A, fused
Mechanics	
- Load modules per rack	Up to 10
- Weight of rack	≈ 12.3 kg (27.1 lb)
- Weight of fully equipped rack	≈ 35.8 kg (78.9 lb)
- Dimensions of rack (W x H x D)	19" x 6U x 500 mm (19.7")
Ordering number	33138336



Technical Data	EA-ELM 5080-25 (Load module)	EA-ELM 5200-12 (Load module)
DC: Voltage		
- Rated voltage & range	0...80 V	0...200 V
- Accuracy	≤0.1% of rated value	≤0.1% of rated value
DC: Current		
- Rated voltage & range	0...25 A	0...12 A
- Accuracy	≤0.2% of rated value	≤0.2% of rated value
- Load regulation 1-100% ΔU_{DC}	≤0.05% of rated value	≤0.05% of rated value
DC: Power		
- Rated voltage & range	0...320 W	0...320 W
- Accuracy	≤1% of rated value	≤1% of rated value
Display / control panel	Graphics display with touch panel	
Digital interfaces		
- Built-in (front side)	1x USB type A for USB sticks, 1x Ethernet	
Cooling	Temperature-controlled fans	
Ambient temperature	0...50 °C	
Storage temperature	-20...70 °C	
Terminals		
- DC input	Screw terminal	
- Sense	Screw terminal	
- Other	Ethernet, USB	
Mechanics		
- Weight	2.35 kg (5.2 lb)	
- Dimensions (W x H x D)	81 x 132.5 x 310 mm (3.2" x 5.2" x 12.2")	
Ordering number	33220430	33220431



绿测科技有限公司

广州总部：广州市番禺区陈边村金欧大道83号江潮创意园A栋208室
深圳分公司：深圳市龙华区龙华街道 油松社区东环一路1号耀丰通工业园1-2栋2栋607
南宁分公司：广西自由贸易试验区南宁片区五象大道401号五象航洋城1号楼3519号
广州分公司：广州市南沙区凤凰大道89号中国铁建·凤凰广场B栋1201房
电话：020-2204 2442
传真：020-8067 2851
邮箱：Sales@greentest.com.cn
官网：www.greentest.com.cn



微信视频号



绿测科技订阅号



绿测工场服务号