

California Instruments Ls Series

3000–18000 VA

3-18 kVA Programmable AC Power Source / Analyzer

135–400 V

- Backward Compatible with L Series
Function and bus compatible with the California Instruments L Series
- Three phase and Single phase modes
Ideally suited for avionics and defense applications
- 3 kVA to 18 kVA Power Levels
Match power source and cost to application requirements
- Transient Programming
Test products for susceptibility to AC line disturbances
- Built-in Measurements
Performs voltage, current, and power measurements
- Advanced Features
Arbitrary waveform generation, harmonic analysis, GPIB interface are some of the available options
- Interface
Standard USB & RS232C interface.
Optional GPIB & LAN available
- CE Marked (400V Input model ONLY)
Safe, reliable, and consistent operation



Applications

With precise output regulation and accuracy, high load drive current, multi or single phase mode and built-in measurement capabilities, Ls Series AC sources address many application areas of AC power testing. Additional features such as DO 160, MIL 704, Boeing, or Airbus test standards are available options that establishes the Ls Series as a solid choice for avionics or defense applications. All Ls Series AC sources are standard equipped with USB and RS232C remote control interfaces. GPIB and Ethernet (LAN) interfaces are optional.

Compatibility

Although the standard command language is SCPI, the Ls Series also offers functional and bus compatibility with the CI L Series AC power sources. Using the APE (Abbreviated Plain English) command syntax, the Ls Series can be used in existing test systems without having to modify program code. The APE language is part of the -GPIB option which includes a GPIB/ IEEE-488 interface.

Integrated System

The Ls Series is an improved version of the classic California Instruments L Series AC power sources. The Ls Series provides many basic AC source capabilities at an economical cost. Additional capabilities such as arbitrary waveform generation and harmonic analysis can be added as options.

The Ls Series can be ordered in either single phase (-1) or three phase (-3) configurations. Power levels range from 3 kVA to 6 kVA in a single chassis. Multiple chassis can be combined for power levels up to 18 kVA.

Easy-To-Use Controls

The Ls Series is completely microprocessor controlled and can be operated from simple front panel controls. A pair of analog controls located next to the backlit alphanumeric LCD display allows output voltage and frequency to be slewed up or down dynamically. For more advanced operations, a series of menus is provided using a dual line high contrast LCD display. An optional full keypad is available.

0–132 A



208

230

400



230

ETHERNET



RS232

Transient Programming

To simulate common line disturbance occurrences, the Ls Series offers a list of transient steps. These steps can be programmed from the front panel or downloaded over the interface using the Interface Instrument Control Software (GUI) program supplied. The GUI allows libraries of commonly used line disturbances to be created on disk for quick recall. Once downloaded, the transient program can be executed from the PC or from the front panel. AC transient generation allows the effect of rapid changes in voltage, frequency, phase angle and waveform shape on the unit under test to be analyzed. The Ls Series is available in either three or one phase output configurations and offers standard voltage ranges of 135 Vrms and 270 Vrms. A wide range of options can be added to customize the Ls Series to meet your specific application requirements.

Voltage Range Options

Output voltage range options are available to provide higher voltage outputs. In addition to the standard 135/270 V range pair, 156/312 Vrms (-HV option) or 200/400 Vrms (-EHV option) can be specified at the time of order. All voltage ranges are Line to Neutral. On three phase Ls Series models, maximum Line to Line voltages are 467 V (standard), 540 V (-HV option) and 692 V (-EHV option).

Phase Mode

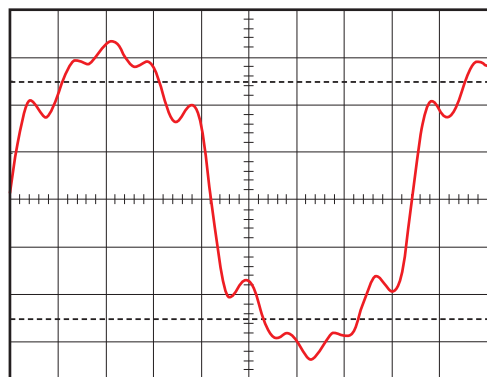
The -MODE option provides automatic switching between three phase and single phase output modes. In single phase mode, all output current is routed to the Phase A output terminal. The -MODE option is available for 3 phase Ls configurations.

Waveform Generation

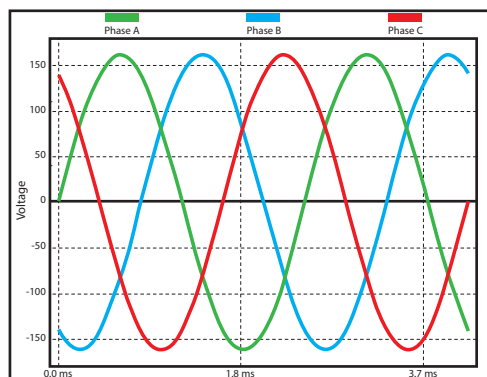
The standard Ls Series provides sine wave output capability. For more demanding test applications, the advanced option package (-ADV) adds the following waveform capabilities:

- Squarewave.
- Clipped Sinewave - Simulates THD levels to test for harmonic distortion susceptibility.
- Harmonic and Arbitrary (User defined) waveforms.

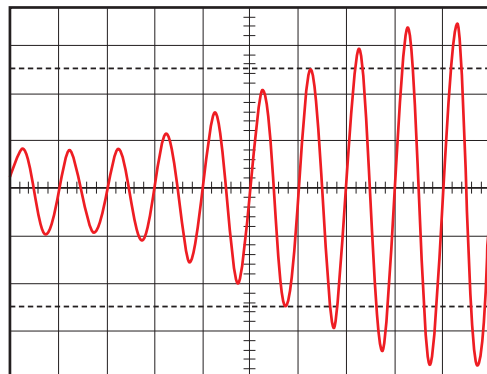
Using the provided Windows GUI, defining harmonic waveforms is as easy as specifying the relative amplitude and phase angle for each of up to the 50th harmonic. The waveform data points are generated and downloaded by the ICS to the AC source through the standard RS232C, USB or optional LAN or GPIB bus and are retained in non-volatile memory. Up to 50 waveforms can be stored and named for easy recall.



Harmonic waveform, Fund., 3rd, 5th, 7th and 9th.



Three phase output mode.



Voltage sweep transient causes output voltage to change at a programmed rate.

Ls Series - Measurement and Analysis

The Ls Series measurement system is based on real-time digitization of the voltage and current waveforms using a 4K sample buffer. The digitized waveform data is processed by a Digital Signal Processor to extract conventional load values such as rms voltage, rms current, real and apparent power. With the addition of the advanced features option. (-ADV option), the same data can also be used to perform Fast Fourier Transformation (FFT) to extract the harmonic amplitude and phase angle of 50 harmonics, or display acquired voltage and current waveforms.

Standard Measurements

The following standard measurements are available from the front panel or via the bus:

- Frequency and Phase
- Voltage (rms)
- Current(rms) and Peak Current
- Crest Factor
- Real Power and Apparent Power
- Power Factor

Advanced Measurement Functions (-ADV option)

Power analysis of EUT load characteristics is available by adding the -ADV option. Harmonics up to the 50th harmonic (for fundamental frequencies up to 250 Hz) and total harmonic distortion of both voltage and current is provided as well.

Harmonic analysis data can be displayed on the front panel display or on the PC using the GUI program. The GUI can also be used to save and print harmonics data in tabular, bar graph or time domain formats.

The acquired voltage and current time-domain waveforms for each output phase can be displayed using the GUI program. Waveform displays on the PC. Available display modes include voltage and current combined, three phase voltage, three phase current and true power. The time-domain data is also available for transfer to a PC through the bus when using custom software.

Diagnostics Capability

The AC Source can perform a self test and report any errors. The self test will run until the first error is encountered and terminate. The response to the self test query command will either be the first error encountered or 0 if no error was found. (Self test passed).

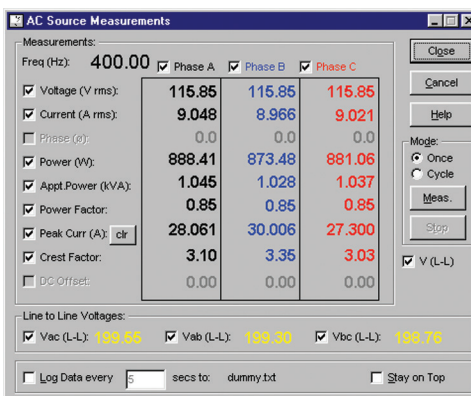
Windows Graphical User Interface

A Windows compatible Instrument Control Software (GUI) offers a soft front panel interface for operation from a PC. The following functions are available through this GUI program:

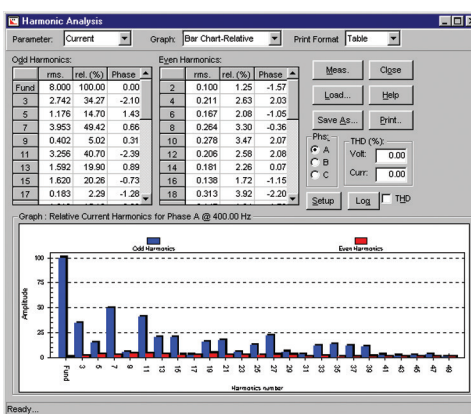
- Steady state output control (all parameters).
- Create, run, save and print transient programs.
- Measure and log standard measurements.

With -ADV option:

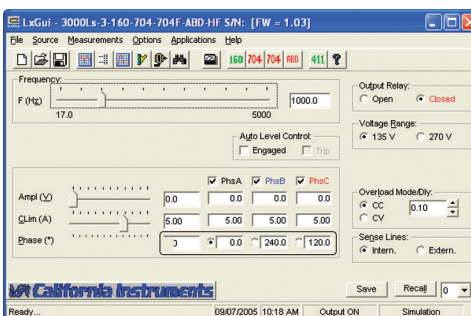
- Generate and save harmonic waveforms.
- Generate and save arbitrary waveforms.
- Capture and display Voltage and Current waveforms.
- Measure, display, print and log harmonic voltage and current measurements.



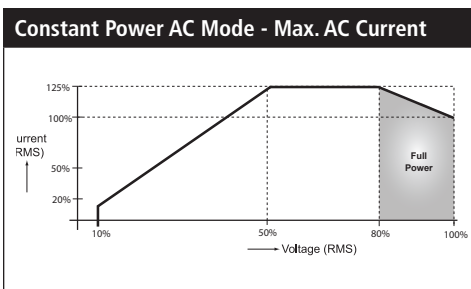
Standard measurements for all phases.



Standard measurements for all phases.



Standard measurements for all phases.



Ls Series : Specifications

Output											
Maximum Power per phase	3000Ls: 1 phase: 3000 VA, 3 phase: 1000 VA; 4500Ls: 1 phase 4500 VA, 3 phase 1500 VA; 6000Ls: 1 phase 6000 VA, 3 phase: 2000 VA										
Power factor	0 to unity at full output VA										
Voltage Ranges	Range	V Low	V High	VA Programming Resolution	100 mV						
	AC	0-135V	0-270V	Load Regulation	< 0.1 % FS						
				Line Regulation	< 0.02 % for 10 % line change						
	See -HV and EHV options for alternative voltage range pairs.										
Programming Accuracy (25°C ±5°C)	Voltage (rms): ± (0.05% + 0.25) V from 5.0 V to FS; Frequency: ± 0.025 45 Hz - 819.1 Hz, ± 0.7 % > 819.1 Hz; Phase: ± 1° 45-100 Hz, ± (1° + 1°/kHz) 100 Hz-1kHz										
Frequency Range	45 Hz - 1000 Hz (see -HF option for higher output frequencies) 17 - 45 Hz operation available at reduced voltages										
Frequency Resolution	0.01 Hz at < 81.9 Hz, 0.1 Hz at 82.0 to 819.1 Hz, 1 Hz2 at > 819 Hz										
Max RMS Current	V Range	V high	V low	< At Full Power	Model	3000Ls-3 Ø	3000Ls-1 Ø	4500Ls-3 Ø	4500Ls-1 Ø	6000Ls-3 Ø	6000Ls-1 Ø
	-3 3 Ø	7.4 A	14.8 A	At FS Voltage >	V Low	7.4 A	22.2 A	11.1 A	33.3 A	14.8 A	44.4 A
	-1 1 Ø	22.2 A	44.4 A		V High	3.7 A	11.1 A	5.5 A	16.7 A	7.4 A	22.2 A
	Note: Constant power mode on 3000Ls and 4500Ls provides increased current at reduced voltage; 6000Ls provides maximum voltage.										
Current Limit	Programmable from 0 Amps to maximum current for selected range										
Peak Current	3000Ls: 6 X (I _{rms} @ full scale voltage); 4500Ls: 4 X (I _{rms} @ full scale voltage); 6000Ls: 3 X (I _{rms} @ full scale voltage)										
Output Noise	100mV rms typ. (20 kHz to 1 MHz)			Harmonic Distortion		< 1% (at full scale voltage, full resistive load)					
Isolation Voltage	300 V rms output to chassis			Output Relay		Push button controlled and bus controlled output relay					
Input											
Voltage	Models 3000Ls, 4500Ls, 9000Ls, 13500Ls: Standard: 208-230 ± 10% VAC, (L-L, 3 Phase); Option -400: 400 ± 10% VAC (L-L, 3 Phase); Models 6000Ls, 12000Ls, 18000Ls: Standard 208-230 + 10% VAC (L-L, 3 Phase) 450V L-L: Consult factory										
	Notes: 1. Input must be specified when ordering. 2. -400 option not available on 6000Ls, 12000Ls, 18000Ls. 3. 3000Ls can be operated from 1 phase AC.										
Line Current (rms per phase)	Model	3000Ls	3000Ls (1Phase)	4500Ls	6000Ls (@ 208V)	Inrush Current (Per phase):	@ 180-254 V: 50 A peak				@ 360-440 V: 83 A peak
	187 VLL	19 A	32 A	31 A	38 A	Line Frequency: 47-440 Hz					
	360 VLL	10 A	n/a	16 A	n/a						
Efficiency	75% typical										
Power Factor	0.6 typical										
Hold-up Time	At least 10 ms										
System											
Storage	Setup: 16 complete instrument setups / Transient List: 100 transient steps per list (SCPI mode) or 16 transient registers (APE mode)										
Trigger Input/Output	Input: Triggers measurements or transient steps - SMA connector: 10K pull-up / Output: SMA Connector: HCTTL output										
Protection											
Overload/Temp/Voltage	Overload: Constant current or constant voltage mode; Over temperature: Automatic Shutdown; Over voltage: Automatic shutdown										
Regulatory/RFI Suppression	IEC1010, EN50081-2, EN50082-2, CE (for 400V input only), EMC, and safety mark requirements / RIF Suppression: CISPR 11, Group1, Class A										
Measurement											
Measurements - Standard (AC Measurements)	Parameter	Frequency	Phase	Voltage (AC)	Current (AC rms)	Real Power	Apparent Power	Power Factor			
	Range	45-81.91 Hz 82.0-819.1 Hz > 819 Hz	45-100 Hz 100-1000 Hz	0-400 V	0-50 A	0-6 kW	0-6 kVA	0.00-1.00			
	Accuracy* (±)										
	1 Ø mode (-1)	0.1% + 1 digit	0.5°	0.5% + 250 mV	0.1% + 150 mA	0.15% + 9 W	0.15% + 9 VA	0.03			
3 Ø mode (-3)		2°		0.1% + 50 mA	0.15% + 3 W	0.15% + 3 VA	0.01				
Resolution*	.01 Hz / 0.1 Hz / 1 Hz	0.1° / 1°	10 mV	1 mA	1 W	1 VA	0.01				
	* Accurac specifications are in % of reading and apply above 100 counts. For multi-chassis configurations, current, power range and accuracy specifications are times three. Power factor accuracy applies for PF > 0.5 and VA > 50% of max. Frequency measurement specification valid for output > 30 Vrms.										

Note: Specifications are subject to change without notice. Specifications are warranted over an ambient temperature range of 25°± 5° C. Unless otherwise noted, specifications are per phase for a sinewave with a resistive load and apply after a 30 minute warm-up period. For three phase configurations, all specifications are for L-N. Phase angle specifications are valid under balanced load conditions only.

Ls Series : Specifications

3000–18000 VA

Remote Control										
IEEE-488 Interface (option)	IEEE-488 (GPIB) talker listener. Subset: AH1, C0, DC1, DT1, L3, PP0, RL2, SH1, SR1, T6, IEEE-488.2 SCPI Syntax									
USB Interface & Ethernet	Version: USB 1.1; Speed: 460 Kb/s maximum / Ethernet Interface (Optional): specify -LAN option. 10BaseT, 100BaseT, RJ45									
RS232C Interface	Bi-directional serial interface; 9-pin D-shell connector. Handshake: CTS, RTS. Databits: 7 w/ parity, 8 w/o parity. Stopbits: 2. Baud rate: 9600 to 115200. Supplied with RS232C cable / Code and Format: SCPI; APE (option -GPIB)									
Physical Dimensions										
Dimensions (per chassis)	Height: 10.5" (267 mm), Width: 19" (483 mm), Depth: 23.7" (602 mm) (depth includes rear panel connectors)									
Weight	Chassis: Net: 193 lbs / 87.7 Kg, Shipping: 280 lbs / 127.3 Kg (for /2 or /3 model configurations multiply number of chassis)									
Vibration and Shock	Designed to meet NSTA project 1A transportation levels									
Air Intake/Exhaust	Forced air cooling, side air intake, rear exhaust									
Temperature & Diagnostics	Temperature: Operating: 0 to 35° C, full power / Storage: -40 to +85° C; Diagnostics: Built-in self test available over bus (*TST)									
Rear Panel Connectors	* Three phase AC input and output terminal block with safety cover. * IEEE-488 (GPIB) connector (Option -GPIB). * 9-pin D-Shell RS232C connector (RS232 DB9 to DB9 cable supplied). * Remote Inhibit (INH) and Discrete Fault Indicator (DFI). * Remote voltage sense terminal block. * Trigger In1 and Trigger Out1. * System interface connectors. * Auxiliary Output (Option -AX)									
Option -AX Specifications										
Option -AX	Provides separate isolated 26 VAC regulated and 5 Vac unregulated outputs. The 26 V is normally used for servo-synchro excitation, and the 5 V for lamp power. 26 Volt-Accuracy: ± 2%. Current capacity: 3 ARMS. Frequency: 360/440 Hz. Regulation ± 0.05%. 5 Volt-Accuracy: ± 5%. Current capacity: 5 ARMS									
Option -ADV Specifications										
Measurements - Harmonics	Parameter	Frequency Fundamental Harmonics	Voltage	Current						
	Range	45-250 Hz / 0.09 - 12.5 kHz	Fundamental Harmonics 2 - 50	Fundamental Harmonics 2 - 50						
	Accuracy* (±)	0.01% + 1 digit / 0.5% + 1 digit	750 mV 0.3% + 750 mV+0.3%/1 kHz	0.5 A / 0.3% + 150 mA +0.3%/1 kHz						
	Resolution	0.01 Hz / 0.1 Hz	10 mV / 10 mV	10 mA / 10 mA						
* Accuracy specifications are in a percent of reading for single unit in 3-phase mode.										
Waveforms	Pre defined: Sine, Square, Clipped User defined, 1024 addressable data points; Storage: 50 user waveforms, non-volatile memory									
Data Acquisition	Parameters: Voltage, Current time domain, per phase; Resolution: 4096 data points, 10.4 usec (1ø) or 31.25 usec (3ø) sampling interval									
Option -HV Specifications										
Voltage/Frequency Ranges	Low: 0-156 Volt; High: 0-312 Volt / Frequency: With -HF option: 3000Ls, 4500Ls, 6000Ls: 45 Hz - 5000 Hz; 9000Ls, 12000Ls, 13500Ls, 18000Ls: 45 Hz - 5000 Hz									
Max RMS Current at Full Power	3 Phase: High: 6.4 A, Low 12.8 A; 1 Phase: High: 19.2 A, Low: 38.4 A; Note: Constant power modes on 3000Ls and 4500Ls. Current available at reduced voltage for 3000Ls, 4500Ls, and max voltage for 6000Ls									
Max RMS Current at FS Voltage	3000Ls: 3 Phase: High: 3.2 A, Low: 6.4 A; 1 Phase: High 9.6 A, Low: 19.2 A; 4500Ls: 3 Phase: High: 4.8, Low 9.6; 1 Phase: High: 14.4 A, Low: 28.8 A; 6000Ls: 3 Phase: High: 6.4 A, Low 12.8 A; 1 Phase: High: 19.2 A, Low: 38.4 A									
Option -EHV Specifications										
Voltage/Frequency Ranges	Voltage: Low: 0-200 Volt; High: 0-400 Volt / Frequency: With -HF option: 45 Hz - 5000 Hz									
Max RMS Current at Full Power	3 Phase: High: 5.0 A, Low 10.0 A; 1 Phase: High: 15.0 A, Low: 30.0 A; Note: Constant power modes on 3000Ls and 4500Ls. Current available at reduced voltage for 3000Ls, 4500Ls, and max voltage for 6000Ls									
Max RMS Current at FS Voltage	3000Ls: 3 Phase: High: 2.5 A, Low: 5.0 A; 1 Phase: High 7.5 A, Low: 15.0 A; 4500Ls: 3 Phase: High: 3.8, Low 7.5; 1 Phase: High: 11.3 A, Low: 22.5 A; 6000Ls: 3 Phase: High: 5.0 A, Low 10.0 A; 1 Phase: High: 15.0 A, Low: 30.0 A									
Option -HF Specifications										
Measurements:	Parameter	Frequency	Phase	Voltage (AC)	Current (AC rms)	Real Power	Apparent Power	Power Factor		
	F < 2000 Hz: See standard Ls Specifications;	Range	45 - 5000 Hz	< 2000 Hz > 2000 Hz	0-300 V < 1000 Hz / > 1000 Hz	0-50 A	0-5 kW	0-5 kVA	0.00-1.00	
	F > 2000 Hz: See table >	Accuracy* (±)	1 ø mode (-1)	0.1% + 1 digit	0.5°	0.05% + 250 mV	0.5% + 150 mA	0.5% + 9 W	0.5% + 9 VA	0.03
			3 ø mode (-3)		5°	0.1% + 0.1%/kHz +300mV	0.5% + 50 mA	0.5% + 3 W	0.5% + 3 VA	0.01
	Resolution*	0.01 Hz / 0.1 Hz / 1 Hz	0.1° / 1°	10 mV	1 mA	1 W	1 VA	0.01		
* Accurac specifications are in % of reading and apply above 100 counts. For multi-chassis configurations, current, power range and accuracy specifications are times three. Power factor accuracy applies for PF > 0.5 and VA > 50% of max. Frequency measurement specification valid for output > 30 Vrms.										
250 mVrms typical (20 kHz to 1 MHz)	3000Ls 34500Ls, 6000Ls: Standard: -HV 45 Hz- 5000 Hz; -EHV: 45 Hz - 5000 Hz									
Output Noise	250 mVrms typical (20 kHz to 1 MHz)									

Ls Series

Model ¹	Output Power	No of Output Phases		Nom. Input Voltage ²
		-1	-3	
3000Ls	3 kVA	1	3	208-230 V
3000Ls-400	3 kVA	1	3	400 V
4500Ls	4.5 kVA	1	3	208-230 V
4500Ls-400	4.5 kVA	1	3	400 V
6000Ls	6 kVA	1	3	208-230 V
9000Ls/2	9 kVA	1	3	208-230 V
9000Ls/2-400	9 kVA	1	3	400 V
12000Ls/2	12 kVA	1	3	208-230 V
13500Ls/3	13.5 kVA	1	3	208-230 V
13500Ls/3-400	13.5 kVA	1	3	400 V
18000Ls/3	18 kVA	1	3	208-230 V

Note 1: The /2 or /3 designation indicates number of chassis.

Note 2: All input voltage specifications are for Line to Line three phase, delta or wye. Model 3000Ls (208 V input) can be operated on 230 V L-N single phase if needed.

HF Table Model	Max. Freq.
3000Ls	5000 Hz
4500Ls	5000 Hz
6000Ls	5000 Hz
9000Ls/2	2000 Hz
12000Ls/2	2000 Hz
13500Ls/3	2000 Hz
18000Ls/3	2000 Hz

Ordering Information

Model

Refer to table shown for model numbers and configurations. Specify number of output phases (-1 or -3) as part of model number, eg 4500Ls-1 or 4500Ls-3.

Supplied with

User / Programming Manual on CD-ROM, Software and RS232C serial cable.

Options

Input Options

- 400 400 ±10% Volt Line to Line AC input Includes CE Mark. [Not available on 6000Ls, 12000Ls and 18000Ls Models]
- 480 480 ±10% (3 phase output only)

Output Options

- AX Auxiliary outputs, 26 VAC, 5 VAC. Limits upper frequency to 800 Hz.
- HV 156/312 V output range.
- EHV 200/400 V output range.
- HF Extends upper frequency limit. See HF table.
- LF Limits output frequency to 500 Hz.
- FC Modifies output frequency control to ±0.25%



Keypad Options

- KP Upgraded keypad control panel.

Cabinet Options

- RMS Rackmount Slides. Recommended for rack mount applications.
- C prefix Cabinet System. Installed and pre-wired in 19" cabinet.

Controller Options

- ABL Emulates Elgar SL Series
- ADV Advanced feature set. Adds arbitrary waveform generation and harmonic analysis of voltage and current.

- GPIB GPIB interface and APE programming language.
- LAN Ethernet Interface.
- MB Multi-box. Adds controller to auxiliary chassis of multi-chassis systems.
- MODE Add phase mode selection for 3 models
- L22 Locking Knobs.
- LKM Clock and Lock Master
- LKS Clock and Lock Auxiliary
- LNS Line Sync.
- EXS External Sync.

Avionics Test Routine Options

- ABD Airbus Directive 0100.1.8 tests. [AC only]. Requires -ADV and use of Windows PC and included LxGui software.
- AMD Airbus AMD24 Test
- A350 Airbus Test Software
- AIRB Airbus A380, A350 & AMD24 package
- 704 Mil-Std 704 rev D and E test firmware. [AC only]
- 704F Mil-Std 704 rev A - F
- 160 RTCA/DO-160, Change 2, EuroCAE-14D [Section 16, AC only]

* Note Reference the Avionics Test User Manual P/N 4994-971 for a complete listing of performance capabilities.

Option Matrix

	HF	LF	HV	EHV	LKM	LKS	EXS	AX
HF	-	X	O	O	X	X	O	X
LF	X	-	O	O	O	O	O	O
HV	O	O	-	X	O	O	O	O
EHV	O	O	X	-	O	O	O	O
LKM	X	O	O	O	-	X	O	O
LKS	X	O	O	O	X	-	X	O
EXS	O	O	O	O	O	X	-	O
AX	X	O	O	O	O	O	O	-

Note 1: See option matrix

Note 2: -LKS, -LNS and -EXS are mutually exclusive and with Ext Trig function.



绿测科技有限公司

广州总部：广州市番禺区陈边村金欧大道83号江潮创意园A栋208室
深圳分公司：深圳市龙华区龙华街道 油松社区东环一路1号耀丰通工业园1-2栋2栋607
南宁分公司：广西自由贸易试验区南宁片区五象大道401号五象航洋城1号楼3519号
广州分公司：广州市南沙区凤凰大道89号中国铁建·凤凰广场B栋1201房
电话：020-2204 2442
传真：020-8067 2851
邮箱：Sales@greentest.com.cn
官网：www.greentest.com.cn



微信视频号



绿测科技订阅号



绿测工场服务号